

# Gérard Ego

## Leçons progressives de solfège

- Lecture de Notes
- Lecture de Rythmes
- Formules Rythmiques

### Volume 5

à l'usage du cours accéléré  
Préparatoire 1 et Préparatoire 2 en une année



Rédition numérique : Yves Le Ray

**Blog de Formation Musicale :  
<https://odeonfm.home.blog>**

**Adresse mail dédiée à la Formation Musicale :  
[fmodeontremblay@gmail.com](mailto:fmodeontremblay@gmail.com)**

# Leçon 1

## Lecture de notes

ré ♩ = 100 à 120



do mi sol ♩ = 90



## Solfège rythmique

1 ♩ = 72



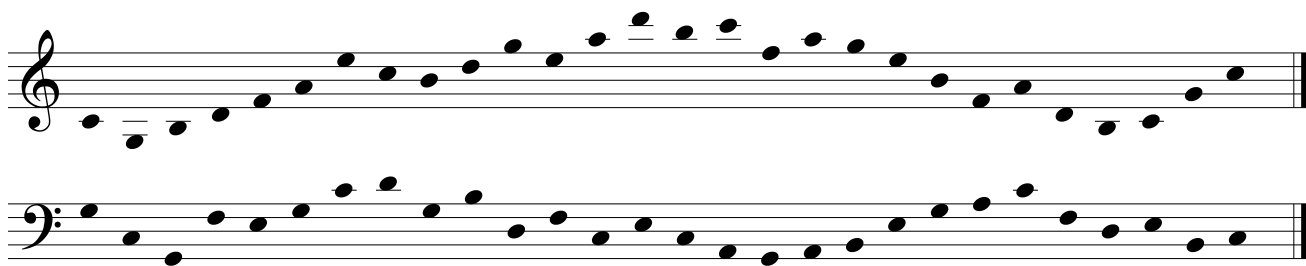
2 ♩ = 72



# Leçon 2

## Lecture de notes

♩ = 100 à 120



ré fa ♩ = 90

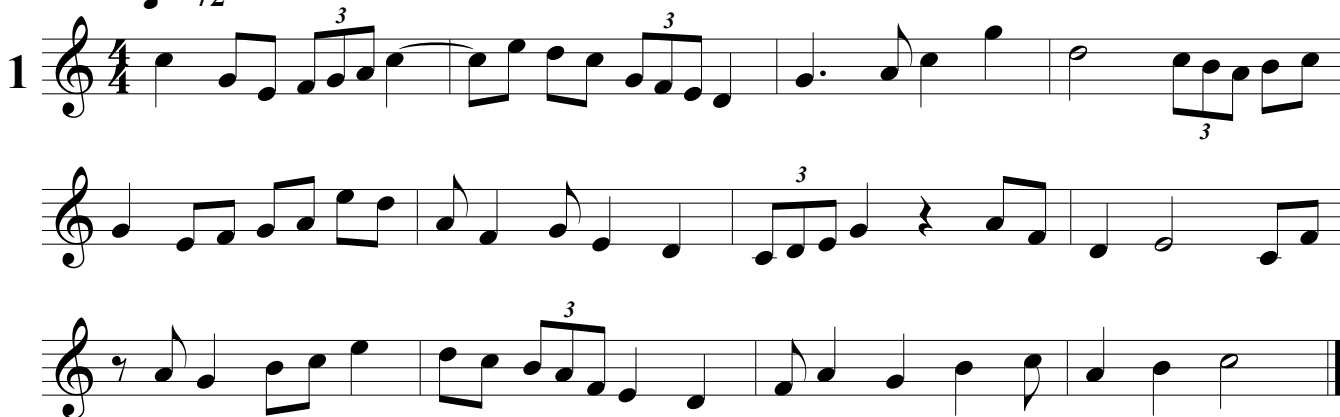


do la



## Solfège rythmique

♩ = 72



♩ = 72



# Leçon 3

## Lecture de notes

Three staves of musical notation for note reading. The first staff is in treble clef with a key signature of one flat (Bb) and a common time signature (C). It starts with the note 'fa' on the second line. The second staff is in bass clef with a key signature of one flat (Bb) and a common time signature (C). It starts with the notes 'si' and 'la' on the first and second lines respectively. The third staff is in bass clef with a key signature of one flat (Bb) and a common time signature (C). It starts with the notes 'ré' and 'mi' on the first and second lines respectively. Each staff contains a sequence of notes, mostly eighth and sixteenth notes, with some rests, ending with a double bar line.

## Solfège rythmique

Two sets of musical notation for rhythmic exercises, labeled 1 and 2. Each set consists of three staves in treble clef with a key signature of one flat (Bb) and a 3/4 time signature. Exercise 1 features a sequence of eighth and sixteenth notes with triplets indicated by a '3' over the notes. Exercise 2 features a sequence of eighth and sixteenth notes with triplets indicated by a '3' over the notes. Each exercise ends with a double bar line.

# Leçon 4

## Lecture de notes

Three staves of musical notation for note reading. The first staff is in treble clef and contains a series of chords. The second staff is in bass clef and contains a series of single notes. The third staff is in bass clef and contains a series of single notes, with the notes 'la' and 'si' written above the first two notes.

## Solfège rythmique

Two sets of musical notation for rhythmic exercises. The first set, labeled '1', is in 6/8 time and has a tempo marking of  $\text{♩} = 66$ . It consists of three staves of music. The second set, labeled '2', is in 3/4 time and has a tempo marking of  $\text{♩} = 72$ . It also consists of three staves of music, with triplets indicated by a '3' below the notes.

# Leçon 5

## Lecture de notes

mi

sol do

fa do

## Solfège rythmique

♩.=66

1

♩.=72

2

# Leçon 6

## Lecture de notes

♩=132

fa ré

♩=104

do sol

## Solfège rythmique

1 ♩.=66

2 ♩.=72



# Leçon 7

## Lecture de notes

♩=132

ré mi fa la si

♩=104

## Solfège rythmique

1

♩=72

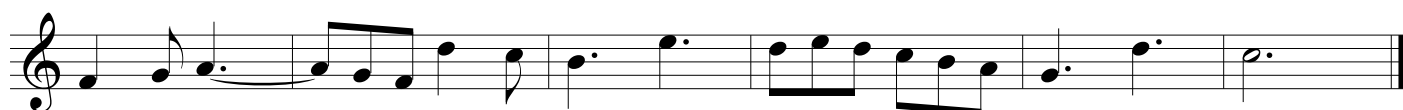
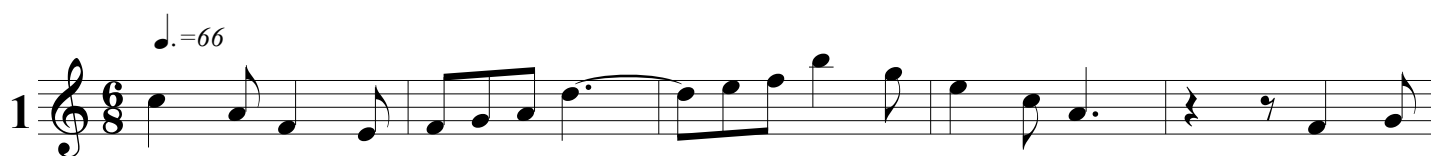
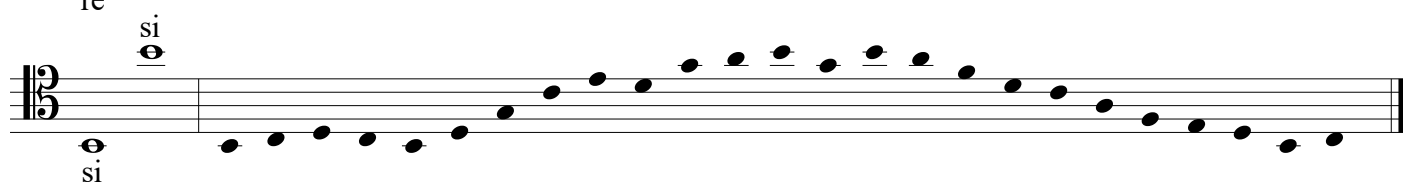
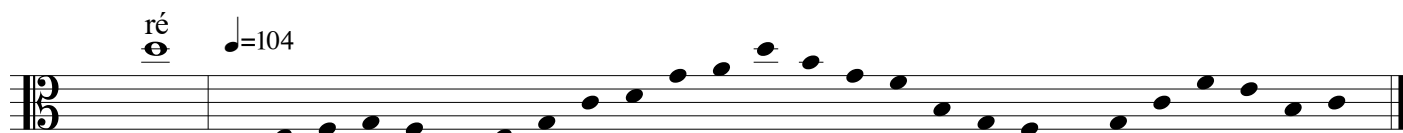
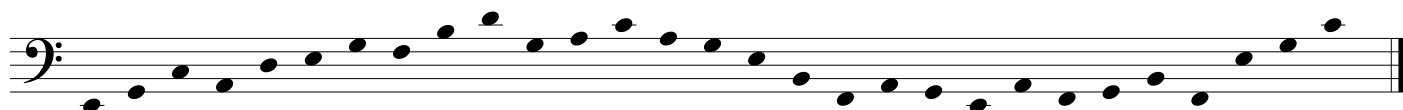
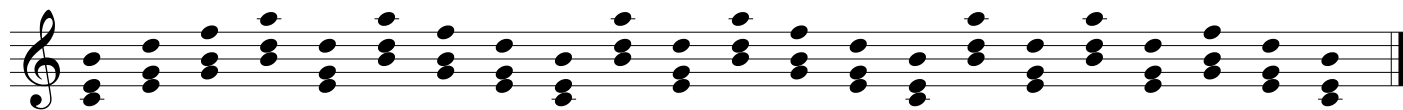
3 3 3

2

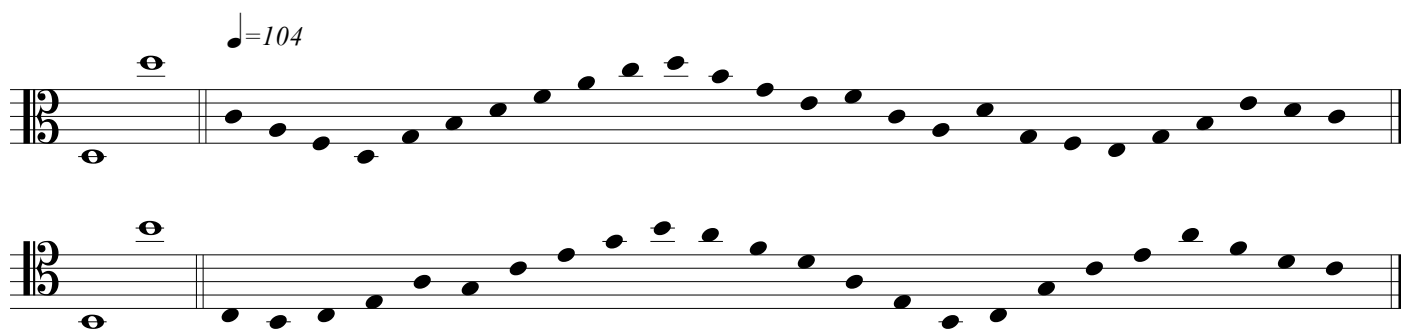
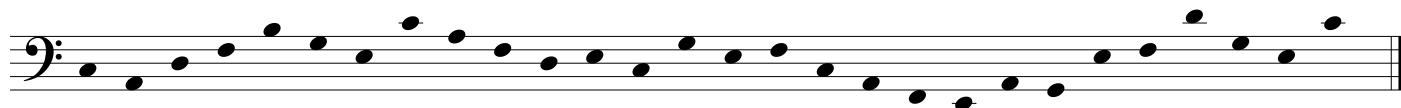
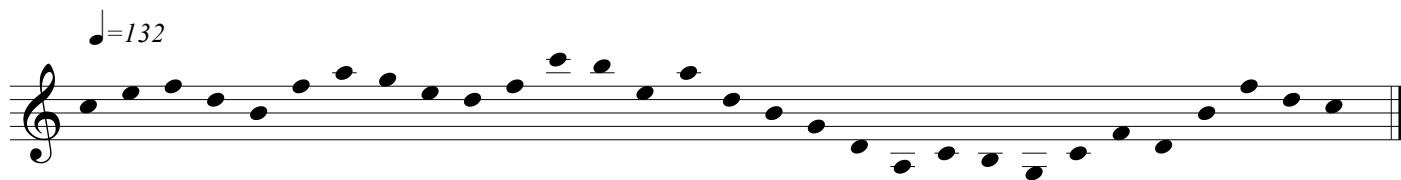
♩=66

3 3 3

# Leçon 8



# Leçon 9



# Leçon 10

$\text{♩} = 132$

First exercise, measures 1-4. Treble and bass staves. Treble staff: quarter notes C4, D4, E4, F4, G4, A4, B4, C5, D5, E5, F5, G5, A5, B5, C6, D6, E6, F6, G6, A6, B6, C7, D7, E7, F7, G7, A7, B7, C8. Bass staff: quarter notes C2, D2, E2, F2, G2, A2, B2, C3, D3, E3, F3, G3, A3, B3, C4, D4, E4, F4, G4, A4, B4, C5, D5, E5, F5, G5, A5, B5, C6, D6, E6, F6, G6, A6, B6, C7, D7, E7, F7, G7, A7, B7, C8.

$\text{♩} = 104$

Second exercise, measures 1-4. Treble and bass staves. Treble staff: quarter notes C4, D4, E4, F4, G4, A4, B4, C5, D5, E5, F5, G5, A5, B5, C6, D6, E6, F6, G6, A6, B6, C7, D7, E7, F7, G7, A7, B7, C8. Bass staff: quarter notes C2, D2, E2, F2, G2, A2, B2, C3, D3, E3, F3, G3, A3, B3, C4, D4, E4, F4, G4, A4, B4, C5, D5, E5, F5, G5, A5, B5, C6, D6, E6, F6, G6, A6, B6, C7, D7, E7, F7, G7, A7, B7, C8.

1  $\text{♩} = 66$

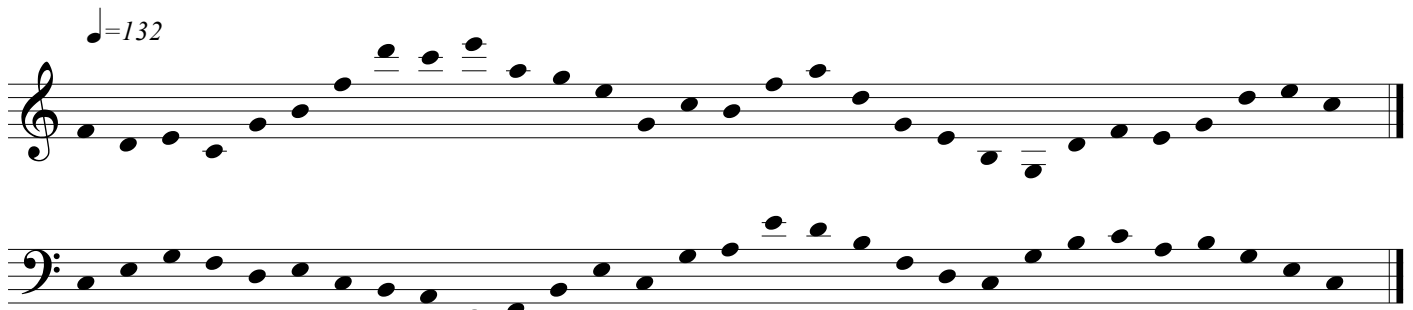
Exercise 1, measures 1-4. Treble staff. Measure 1: quarter notes C4, D4, E4, F4, G4, A4, B4, C5. Measure 2: quarter notes C5, D5, E5, F5, G5, A5, B5, C6. Measure 3: quarter notes C6, D6, E6, F6, G6, A6, B6, C7. Measure 4: quarter notes C7, D7, E7, F7, G7, A7, B7, C8.

2  $\text{♩} = 72$

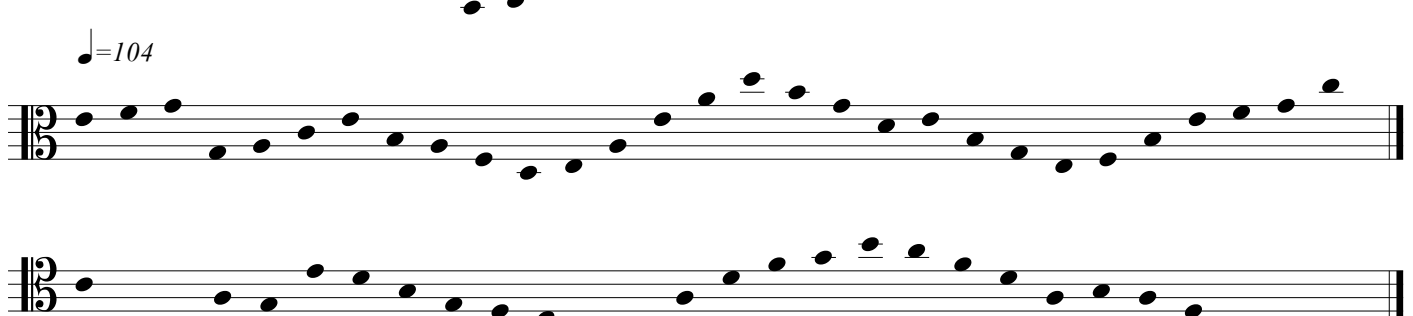
Exercise 2, measures 1-4. Treble staff. Measure 1: quarter notes C4, D4, E4, F4, G4, A4, B4, C5. Measure 2: quarter notes C5, D5, E5, F5, G5, A5, B5, C6. Measure 3: quarter notes C6, D6, E6, F6, G6, A6, B6, C7. Measure 4: quarter notes C7, D7, E7, F7, G7, A7, B7, C8.

# Leçon 11

♩ = 132



♩ = 104



la

1 ♩ = 66



2 ♩ = 72



# Leçon 12

The first system consists of four staves. The top staff is a treble clef staff containing a sequence of 16 chords, primarily triads and dyads, moving across the staff. The bottom three staves are bass clef staves. The second and third staves contain a continuous eighth-note line, starting on G4 and ascending to E5. The fourth staff contains a continuous eighth-note line, starting on G3 and ascending to E4. A tempo marking  $\text{♩} = 104$  is placed above the third staff.

1

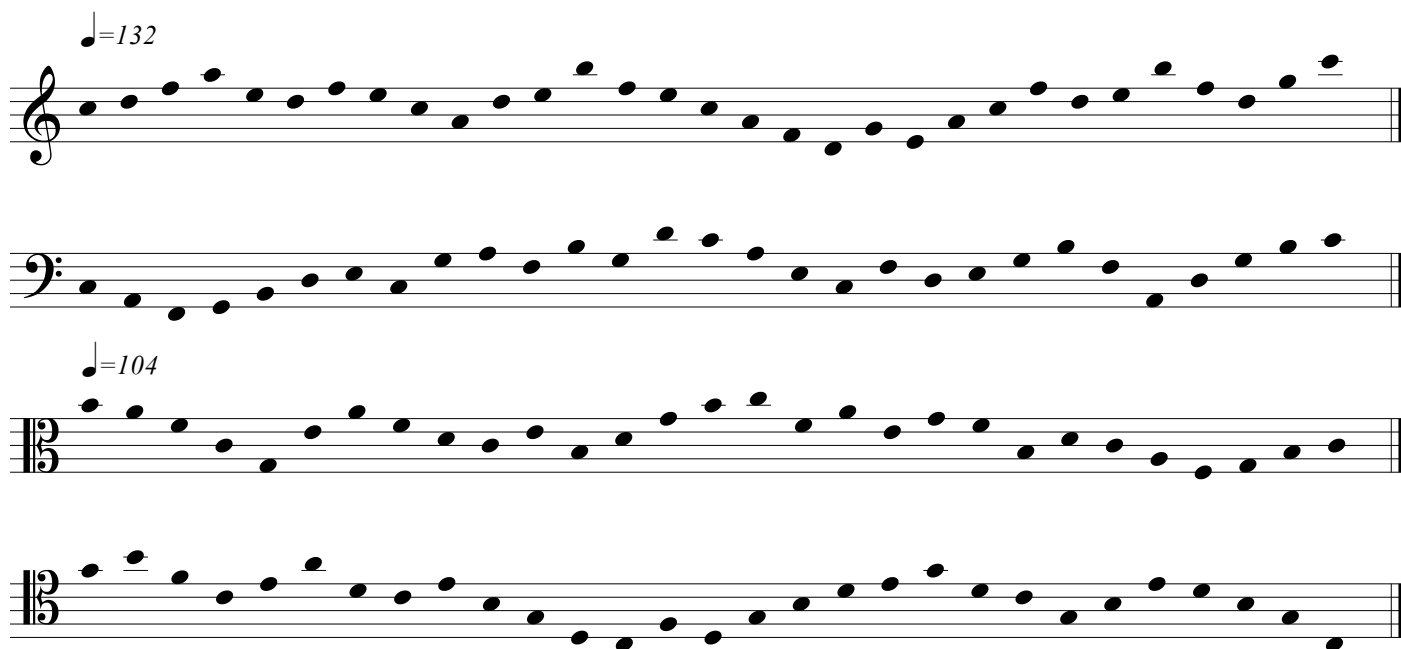
The first system consists of four staves. The top staff is a treble clef staff in 6/8 time, containing a melody of eighth and quarter notes. The bottom three staves are bass clef staves, each containing a continuous eighth-note line. A tempo marking  $\text{♩} = 66/72$  is placed above the first staff.

2

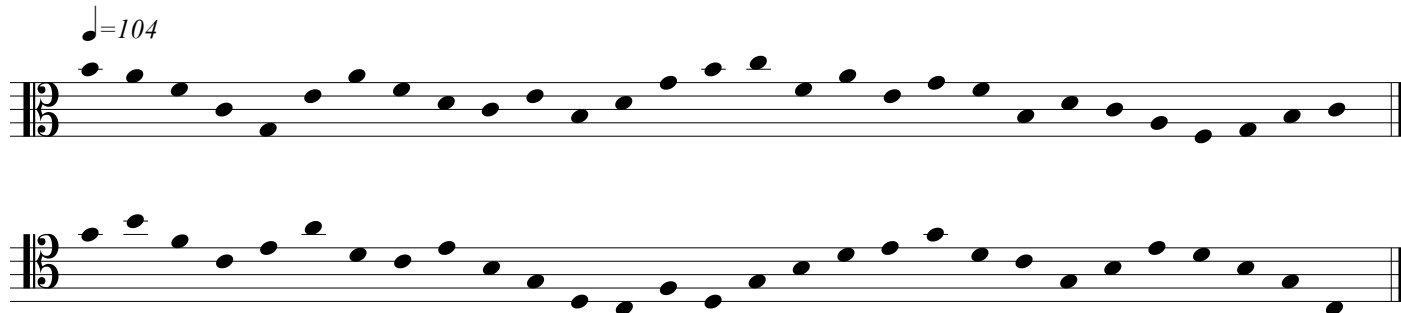
The second system consists of four staves. The top staff is a treble clef staff in 3/4 time, containing a melody of eighth and quarter notes. The bottom three staves are bass clef staves, each containing a continuous eighth-note line. A tempo marking  $\text{♩} = 72/76$  is placed above the first staff. Trill markings (3) are present at the end of the first and third staves.

# Leçon 13

$\text{♩} = 132$



$\text{♩} = 104$



$\text{♩} = 66/72$

1



$\text{♩} = 72/76$

2



# Leçon 14

$\text{♩} = 132$

Two staves of music. The first staff is in treble clef and the second is in bass clef. Both staves contain a continuous sequence of eighth notes, starting on middle C and ascending to G5, then descending back to middle C. The tempo is marked as 132 beats per minute.

$\text{♩} = 104$

Two staves of music. The first staff is in treble clef and the second is in bass clef. Both staves contain a continuous sequence of eighth notes, starting on middle C and ascending to G5, then descending back to middle C. The tempo is marked as 104 beats per minute.

$\text{♩} = 72/76$

1

Three staves of music in 2/4 time. The first staff contains a sequence of eighth notes and quarter notes. The second and third staves contain a sequence of eighth notes, with a triplet of eighth notes marked with a '3' in the second measure. The tempo is marked as 72/76.

$\text{♩} = 72/76$

2

Three staves of music in 2/4 time. The first staff contains a sequence of eighth notes and quarter notes, with a triplet of eighth notes marked with a '3' in the third measure. The second and third staves contain a sequence of eighth notes, with a triplet of eighth notes marked with a '3' in the second measure. The tempo is marked as 72/76.



# Leçon 15

$\text{♩} = 132$

$\text{♩} = 104$

$\text{♩} = 66/72$

1

$\text{♩} = 72/76$

2

# Leçon 16

♩=144

♩=120

This section contains two piano exercises. The first exercise, measures 1-4, is in treble and bass clefs with a tempo of 144 bpm. It features a continuous eighth-note scale in the treble and a descending eighth-note scale in the bass. The second exercise, measures 5-8, is in alto and bass clefs with a tempo of 120 bpm. It features a continuous eighth-note scale in the alto and a descending eighth-note scale in the bass.

♩=100

1

This exercise, measures 9-12, is in treble clef with a tempo of 100 bpm. It is in 2/2 time and features a series of half notes and quarter notes, including some triplets.

♩=76

2

This exercise, measures 13-16, is in treble clef with a tempo of 76 bpm. It is in 4/4 time and features a series of eighth and sixteenth notes, including some triplets.

# Leçon 17

♩=144

Two staves of musical notation. The top staff is in treble clef and the bottom staff is in bass clef. Both contain a continuous sequence of eighth notes, with some notes beamed in pairs. The tempo is marked as ♩=144.

♩=120

Two staves of musical notation. The top staff is in treble clef and the bottom staff is in bass clef. Both contain a continuous sequence of eighth notes, with some notes beamed in pairs. The tempo is marked as ♩=120.

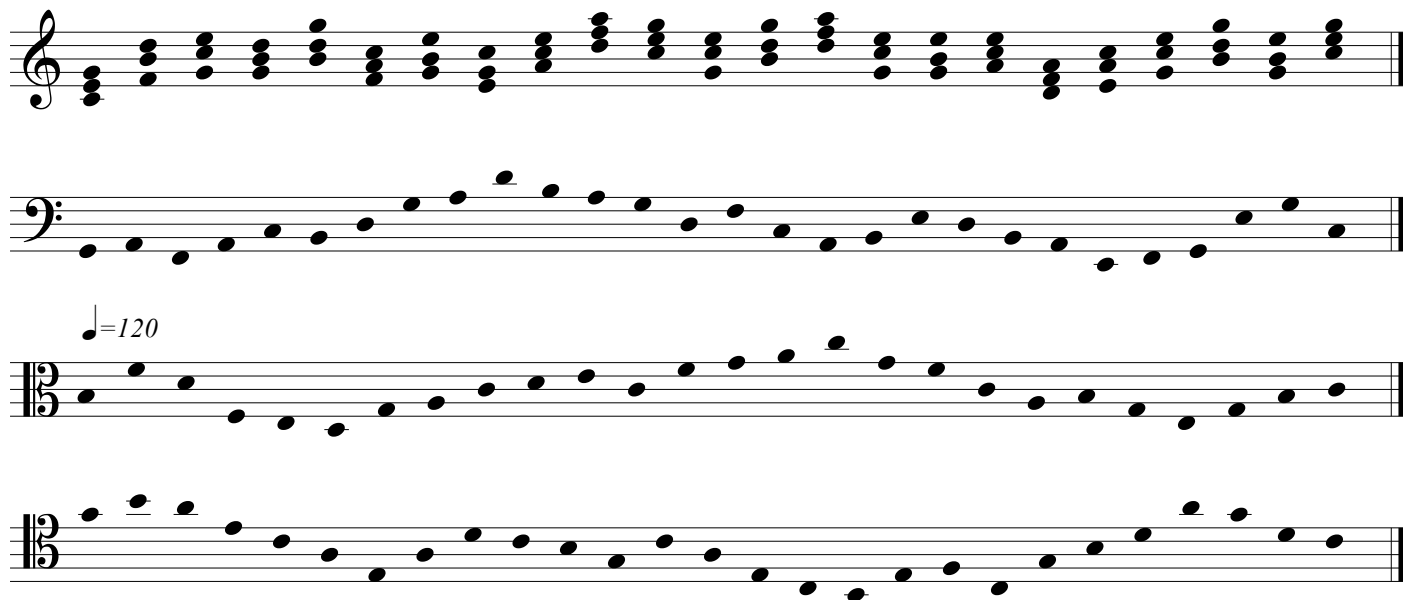
1 ♩=100

Three staves of musical notation. The top staff is in treble clef and the bottom two staves are in bass clef. The exercise consists of eighth and quarter notes with rests. The tempo is marked as ♩=100.

2 ♩=76

Three staves of musical notation. The top staff is in treble clef and the bottom two staves are in bass clef. The exercise consists of eighth and quarter notes with rests. A triplet of eighth notes is marked with a '3' below it. The tempo is marked as ♩=76.

# Leçon 18



Introduction for piano. The first staff shows a sequence of chords in the right hand, while the second and third staves show a continuous eighth-note bass line. A tempo marking of  $\text{♩} = 120$  is present above the third staff.

1



Exercise 1 in 6/8 time, tempo  $\text{♩} = 66/72$ . The exercise consists of three staves of music, featuring eighth and sixteenth notes, rests, and slurs.

2



Exercise 2 in 3/4 time, tempo  $\text{♩} = 76$ . The exercise consists of three staves of music, featuring eighth and sixteenth notes, rests, and triplets indicated by a '3' over the notes.

# Leçon 19

♩ = 144

Two staves of music. The top staff is in treble clef and the bottom staff is in bass clef. Both staves contain a sequence of eighth notes, starting with a half note in the first measure and followed by eighth notes in subsequent measures. The tempo is marked as ♩ = 144.

♩ = 120

Two staves of music. The top staff is in treble clef and the bottom staff is in bass clef. Both staves contain a sequence of eighth notes, starting with a half note in the first measure and followed by eighth notes in subsequent measures. The tempo is marked as ♩ = 120.

1 ♩ = 76

Exercise 1, measures 1-4. The first staff is in treble clef, 4/4 time. The tempo is marked as ♩ = 76. The notation includes eighth notes, quarter notes, and eighth rests. The second staff continues the melody with eighth notes and quarter notes. The third staff continues the melody with eighth notes and quarter notes.

2 ♩ = 76

Exercise 2, measures 1-4. The first staff is in treble clef, 3/4 time. The tempo is marked as ♩ = 76. The notation includes eighth notes, quarter notes, and eighth rests. The second staff continues the melody with eighth notes and quarter notes. The third staff continues the melody with eighth notes and quarter notes. The exercise includes triplets marked with a '3' over the notes.

# Leçon 20

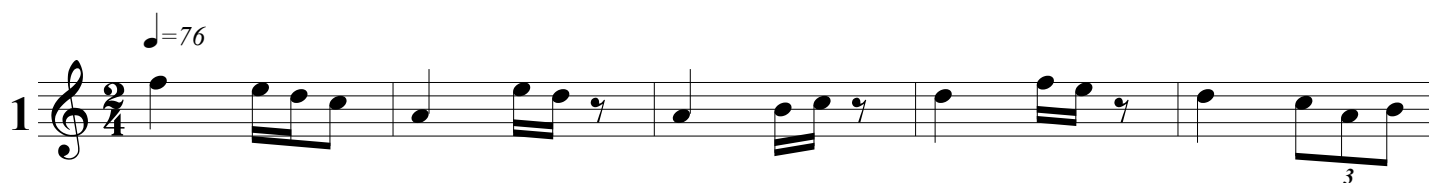
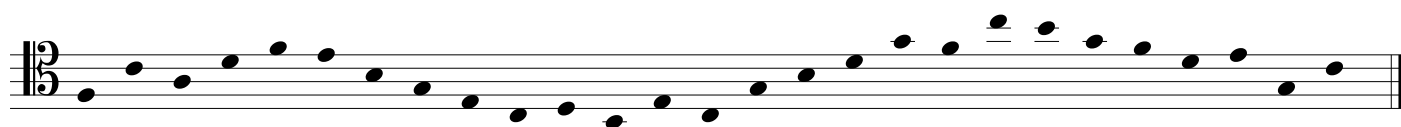
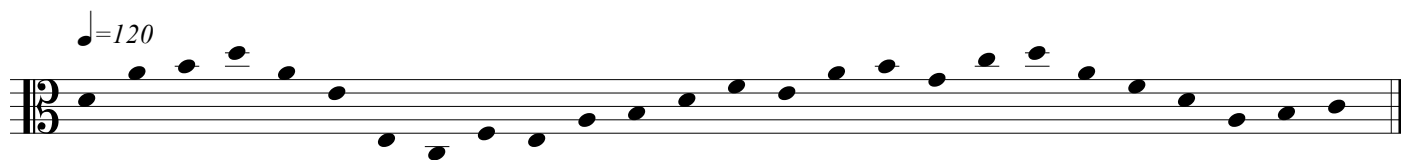
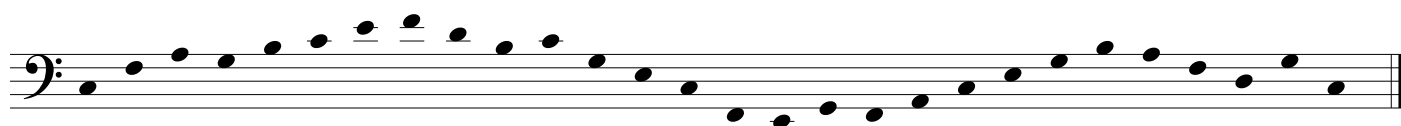
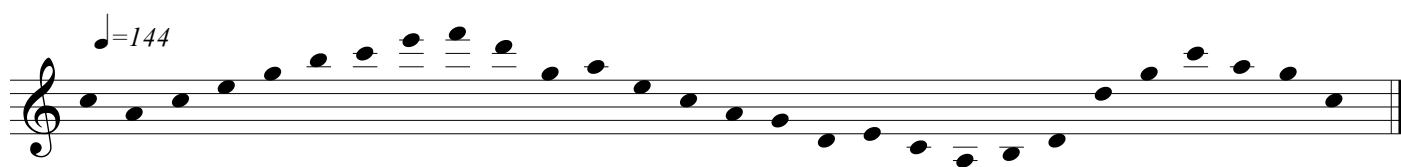
♩=144

♩=120

1 ♩=100

2 ♩=76

# Leçon 21



# Leçon 22

$\text{♩} = 144$

Exercise 1 (Measures 1-4): Treble and Bass staves,  $\text{♩} = 144$ . The exercise consists of a continuous scale-like pattern across four measures.

$\text{♩} = 120$

Exercise 2 (Measures 1-4): Two Bass staves,  $\text{♩} = 120$ . The exercise consists of a continuous scale-like pattern across four measures.

1  $\text{♩} = 76$

Exercise 1 (Measures 5-8): Treble staff, 4/4 time signature,  $\text{♩} = 76$ . The exercise includes triplets and slurs.

2  $\text{♩} = 76$

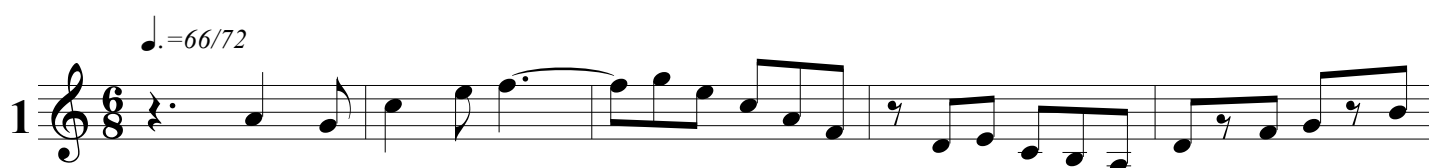
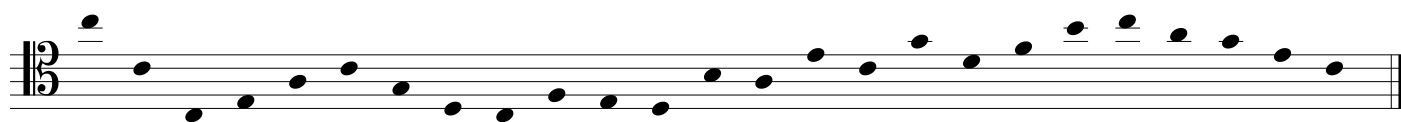
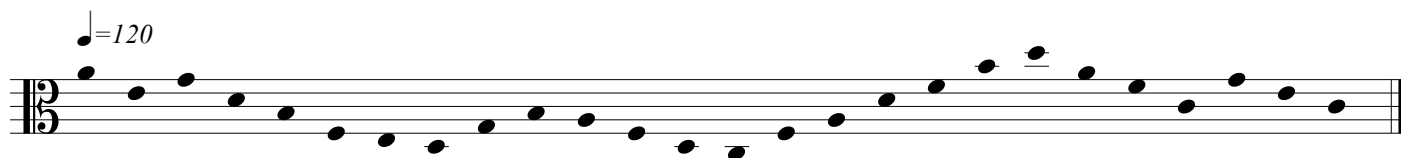
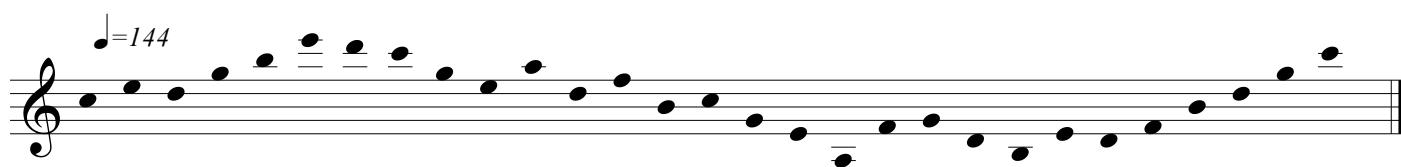
Exercise 2 (Measures 1-4): Treble staff, 2/4 time signature,  $\text{♩} = 76$ . The exercise includes triplets and slurs.

$\text{♩} = \text{♩}$

Exercise 2 (Measures 5-8): Treble staff, 6/8 time signature,  $\text{♩} = \text{♩}$ . The exercise includes triplets and slurs.

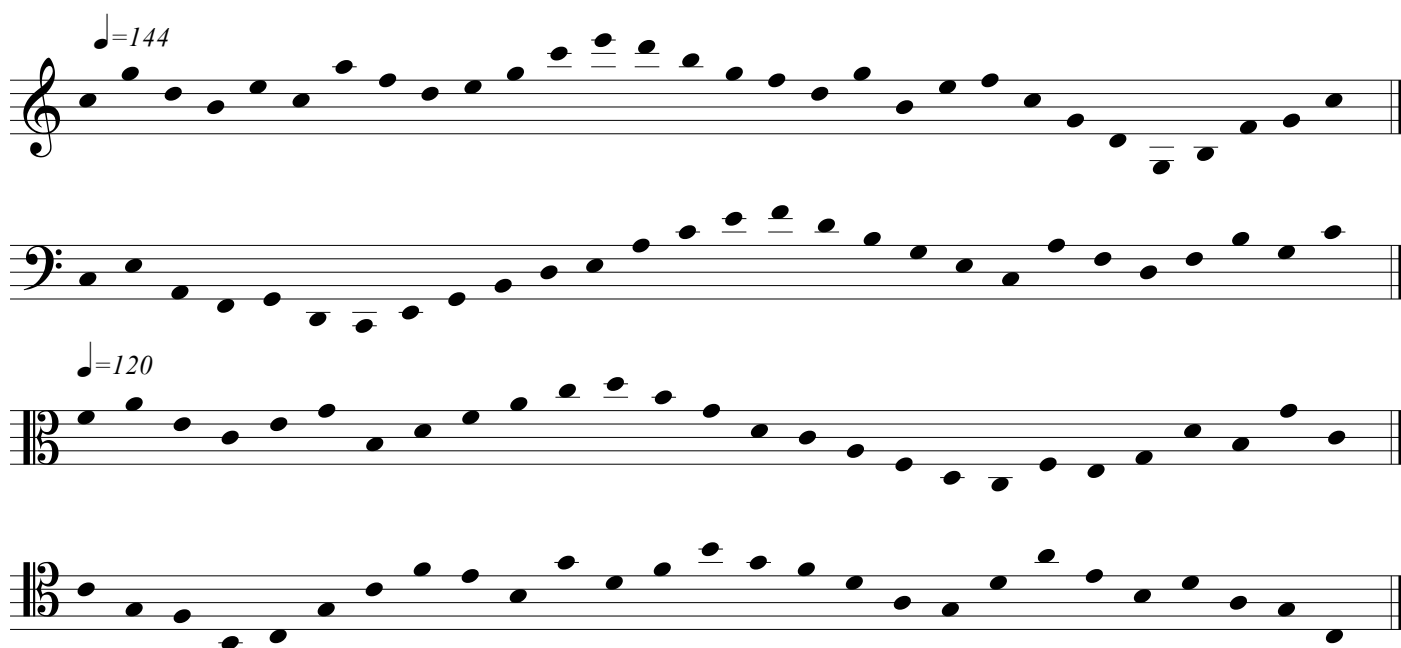


## Leçon 23

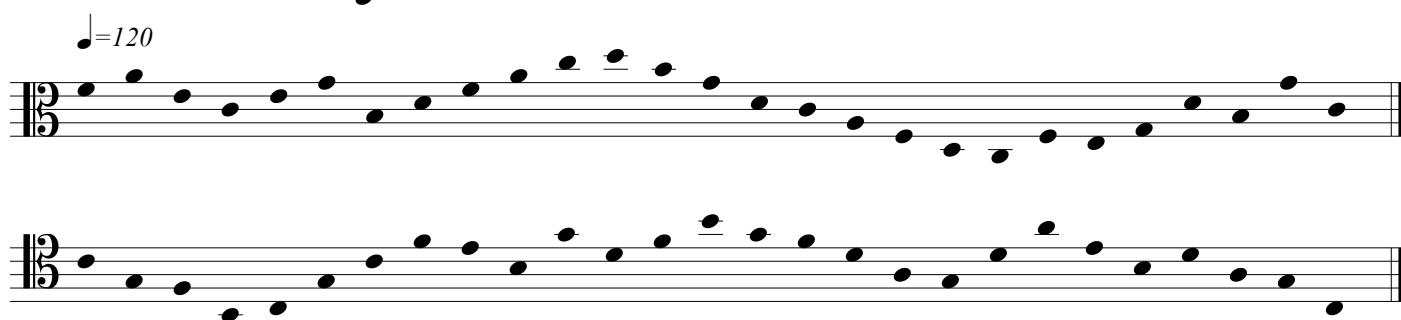


# Leçon 24

♩ = 144



♩ = 120



1 ♩ = 66/72



2 ♩ = 76



# Leçon 25

♩=144

♩=120

Two staves of piano exercise. The first staff (treble clef) and second staff (bass clef) show a continuous eighth-note scale. The tempo is marked as 144 bpm. The third staff (treble clef) and fourth staff (bass clef) show a continuous eighth-note scale. The tempo is marked as 120 bpm.

1

♩=76

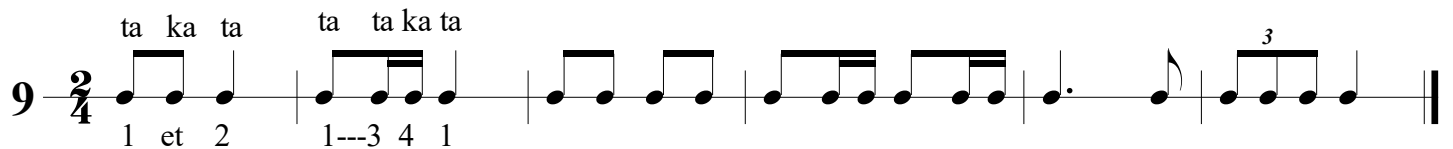
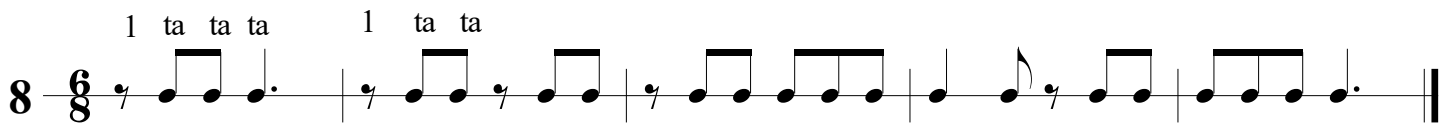
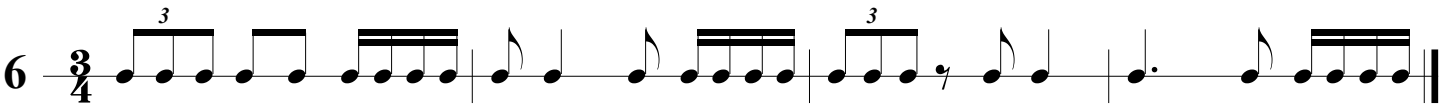
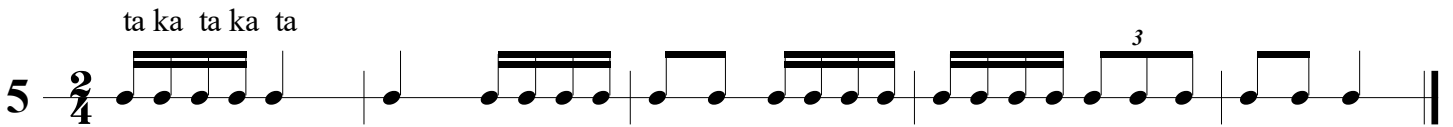
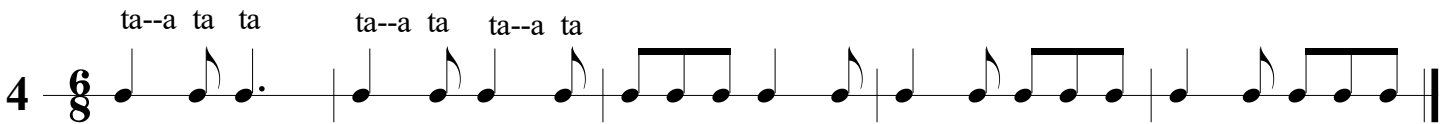
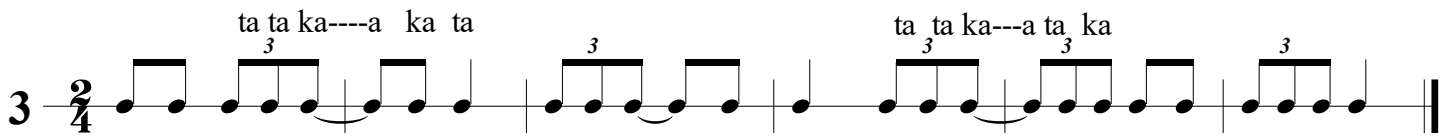
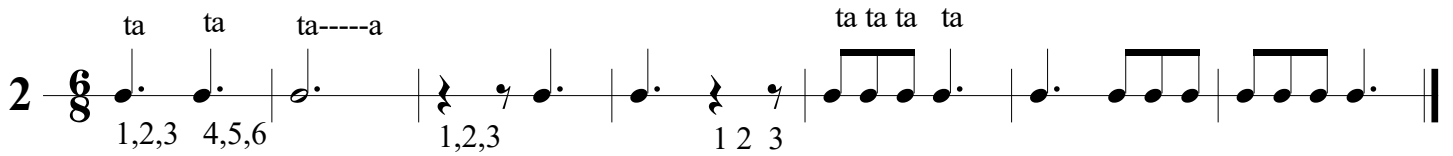
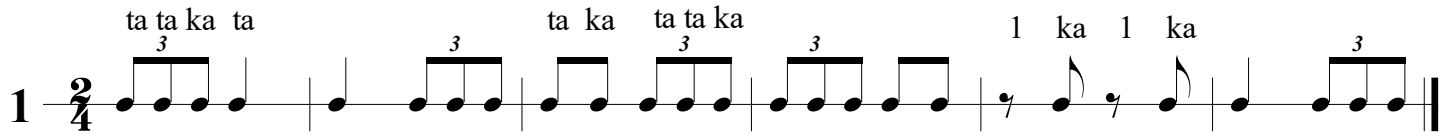
Three staves of piano exercise. The first staff (treble clef) and second staff (treble clef) show a continuous eighth-note scale. The tempo is marked as 76 bpm. The third staff (treble clef) shows a continuous eighth-note scale. The tempo is marked as 76 bpm.

2

♩=76

Three staves of piano exercise. The first staff (treble clef) and second staff (treble clef) show a continuous eighth-note scale. The tempo is marked as 76 bpm. The third staff (treble clef) shows a continuous eighth-note scale. The tempo is marked as 76 bpm.

# Formules rythmiques



## Formules rythmiques suite

$\text{♩} = 80/100$

**11**  $\frac{2}{4}$  ta ka ta | ta ka ta ta | [musical notation] | [musical notation] | [musical notation]

12  $\frac{2}{4}$  ta ka ta

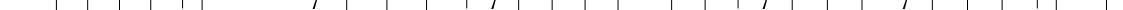
**13**  $\frac{2}{4}$  ta ta ka ta | 1 ta ka ta | ta ta ta ta ta ta | 1 ta ka | ta ta ta ta ta ta ||

14  $\frac{2}{2}$  1,2 | 1 2 | 1 2 | 1 2 | ta ta ka ta ka ta |

15  $\frac{2}{4}$  ta ka ka ta ta ta ka ta ka ta

16 

17  $\frac{2}{4}$  ta ka ta

18  $\frac{2}{4}$  

19  $\frac{2}{4}$  ta ta ka ta

20  $\frac{2}{4}$  ta ka ka ta



